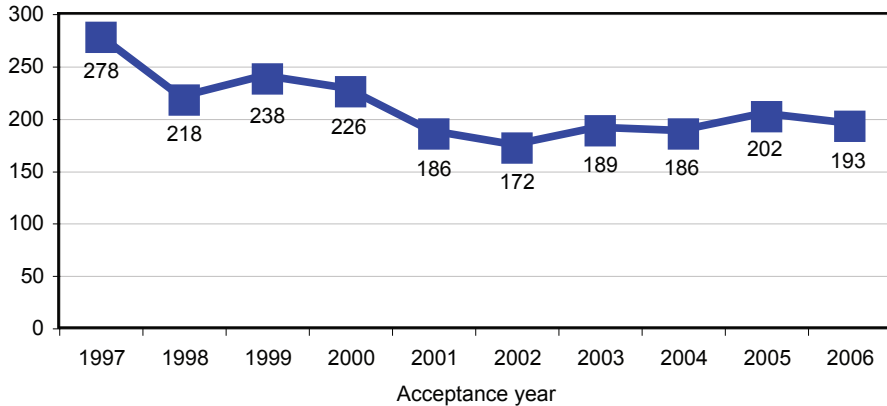


Figure 1. Accepted disabling claims involving forklifts and other industrial power carrier vehicles by acceptance year, Oregon, 1997-2006



Accepted disabling claims are claims, accepted by insurers, arising from occupational injuries or diseases that entitle workers to compensation for disability or death.

The current table includes accepted disabling claims in which either the primary or secondary source of the injury was either a forklift (source codes 8510-8519) or another powered industrial carrier (source codes 8520-8529).

Source of injury is classified according to the Occupational Injury and Illness Classification System (OIICS).

Source data are continually updated to be as accurate as possible, so report results may vary over time.

Source: Information Management Division, Oregon Department of Consumer and Business Services